

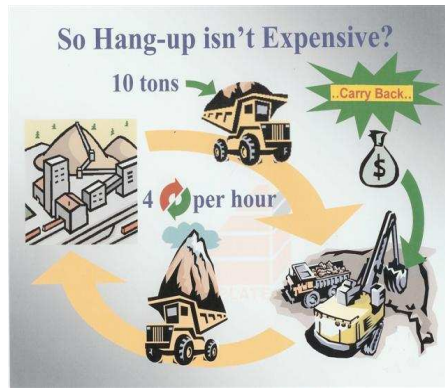
Hang –up / Carry Back

Hang up / Carry Back impacts on machine performance :

- Increases fuel consumption.
- Increases wear & tear on hydraulics and mechanical components.
- Loss of effective machine utilisation.
- Increases maintenance periods which effects machine availability time.

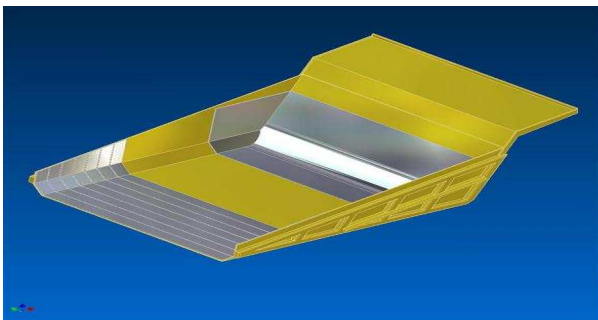


Without ARCOPLATE



With ARCOPLATE

- *****
- ARCOPLATES high Chromium Carbide content obtains a highly polished surface by either pre-polishing or natural material flow.
 - Creates a low friction surface which does not allow the build up of micro sized particles that cause hang up.
 - As an addition to eliminating Carry Back / Hang Up, ARCOPLATE is also the world's most wear resistant fused alloy steel plate with laboratory and field tests showing that it will outlast quenched & tempered wear plate by a factor up to 6 to 1.



ARCOPLATE Anti Hang Up Kit



Matt Reflective Finish on ARCOPLATE

Alloy Steel International - Australia

Ph : +61 8 924 83 188

Fax : + 61 8 924 83 166

E-Mail : info@alloysteel.net

Web Site : www.alloysteel.net

